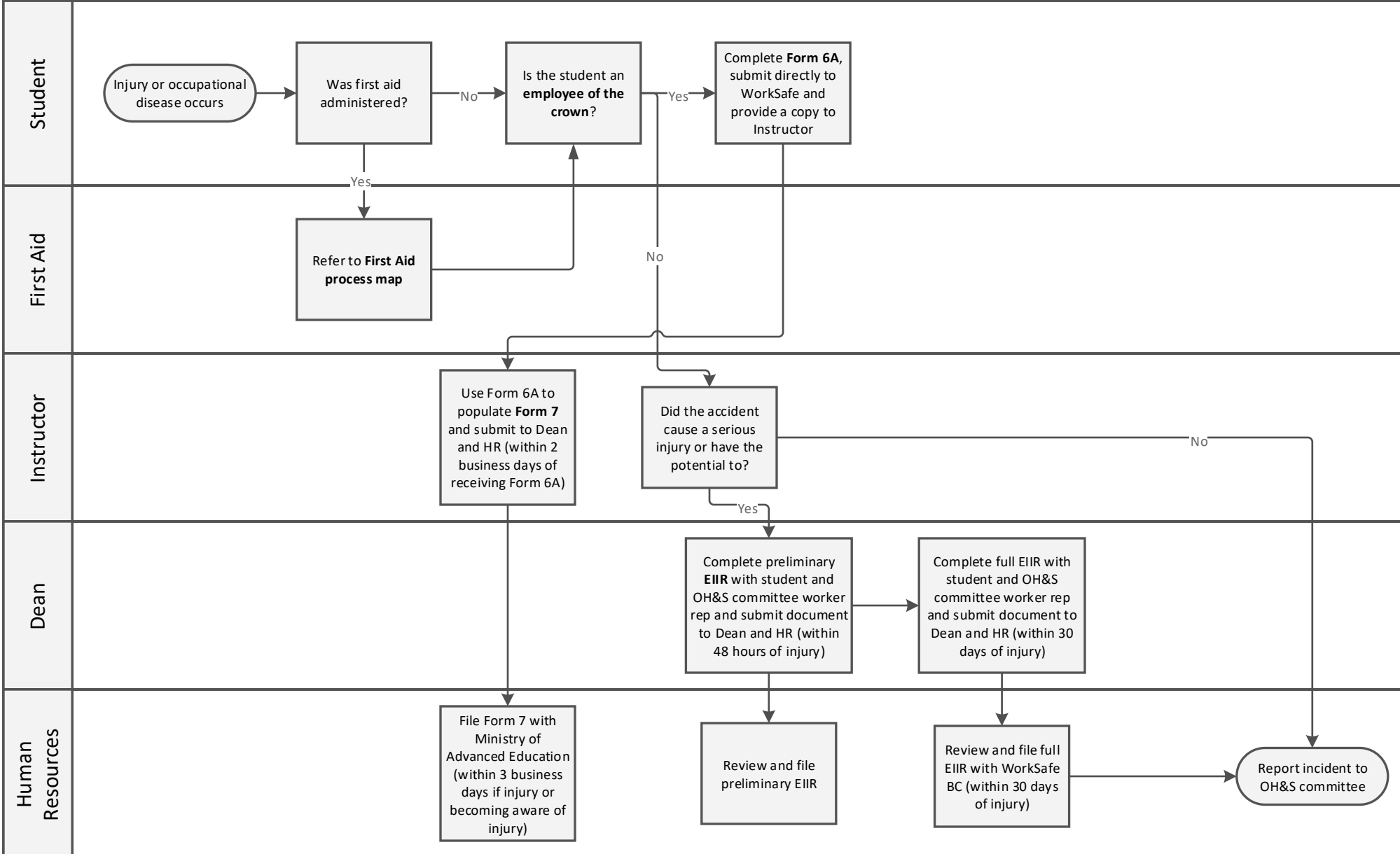


OH&S Process Map



Student Injury or Occupational Disease – WorkSafeBC Reporting Requirements



Resources:

Form 6A: Worker's Report of Injury or Occupational Disease To Employer (form 6A).

Form 7: Employer's Report of Injury or Occupational Disease (form 7).

Employees of the crown (students): Unpaid practicum or apprenticeship students attending the institution (Policy Regarding WorkSafeBC Coverage for Post-Secondary Students Deemed to be Employees of the Crown, section 4).

First Aid process map: OH&S process map found on CMTN website or SharePoint porta under Health & Safety topics.

EIRR: Employer incident investigation report (Guide to Completing an Employer Incident Investigation Report (EIRR)).